

LIBSOFT®

The Key to your Library

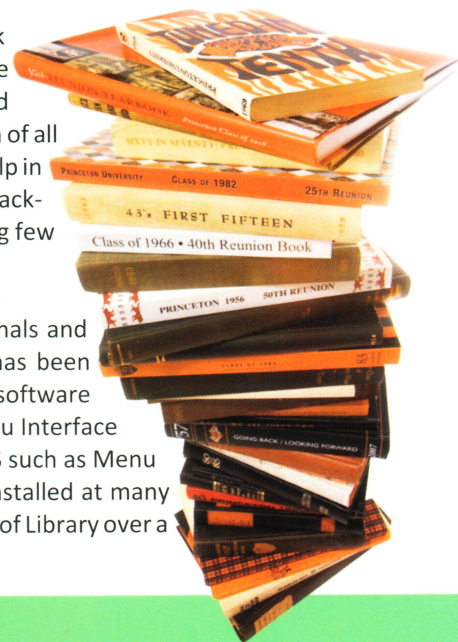


Environ Software Pvt. Ltd.

Library Automation Software

Modern library is a place where useful information is available round the clock in a digital network environment. Providing information about everything under the sun, under one roof in one geographical location is next to impossible. Hence there must be a way to share information that is spread over, and that can be achieved only through the effective use of electronic media. Complete automation of all the libraries and a dedicated, centralised server to host information available at different libraries will help in effective sharing of information. A library is completely automated only if the user, irrespective of background or knowledge, is able to access information available in the library from anywhere just by typing few letters/words.

Libsoft is a multi user package designed and developed by a team of highly skilled library professionals and software professionals for effective management of a library from different angles. This package has been designed to handle huge volumes at lightening speed thus saving manpower. Libsoft is Windows based software and it runs in any Windows environment and hence it has excellent Graphical User Interface. The Menu Interface has been designed to operate the software by use of mouse and contains other features of WINDOWS such as Menu bars, Icons on Tool bars, Scroll bars, Buttons, List boxes, Function keys, etc. The software has been installed at many libraries, on windows environment and the software package has proved its efficacy in the management of Library over a decade.



FEATURES OF LIBSOFT

Absolutely user friendly software that requires minimum training.

Simplified package, which requires minimum user interaction.

Multi user package with database loaded in the server. The individual nodes across different departments can share the data from the server.

Multi Center facility to combine 2 or more centers using single server.

Interactive features for data handling i.e. Importing and Exporting data according to MARC21 format between different libraries across different countries.

Information resource retrieval protocols: Z39.50 supports information retrieval among different information systems.

Functional Requirements for Bibliographic Records or FRBR supports to relates user tasks of retrieval and access in on line library catalogues.

Dynamic backup support (Automatic) from server and client.

Create/Modify/Delete different users (Password Protected), with restrictions set by the administrator at the time of creation.

Generates Purchase Orders that can be sent by E-mail directly. The system keeps track of the items arrived as against the items ordered.

Automatic tracking of items for ordered, received, reminders etc.

Multiple Material (Books, Reports etc.) and Media (CD, Audio/Video cassette, Microfilm, Maps etc) cataloging are in one place.

Find & Replace facility for spelling correction.

The background image of the software can be changed easily as and when required.

Circulation can be done for 2 or more documents at a time with Bulk issue and bulk return for every member with single entry

Announcements(News/Messages) will be displayed to all members in individual member web OPAC account.

Members can check their transaction details(title of their transaction, due date, fine amount and reserved material details) through web OPAC.

Integrated multi-lingual uncatalogued facility with the language selected by the user.

Semi-Automatic DDC (Dewey Decimal Classification) based Classification Number generation.

Expenditure monitoring through budget control for user defined grants.

Circulation with bar code interface makes hassle free transaction at faster rate. (The user needs very few interaction with the system).

Circulation settings for different materials with different cards and due days.

Using RFID, circulation will be done fast.

Simplified serials module with auto reminder.

Excellent multiple reservation facility to reserve the book which has been issued.

Internet Interface facility from the software.

Enhanced but Simplified search facility (Boolean search i.e. like, =, <, >, <=, >= and <> conditions) to locate books, members, purchase orders and vendors quickly. Reports and Transactions can also be searched.

Enhanced documentation facility for preparing detailed reports the way user prefers like Multi-Lingual display of search results.

Title of the Report, date and Time of report generation will be shown as Report heading.

Membership card for Members/Users with Bar code.

Automatic Bar code generation for Accession numbers of materials (Books, Journals, CD, DVD, Project report, etc.,)

Optional RFID security system to monitor materials In and Out. It reveals high security of materials.

Easy way to installation of Libsoft with inbuilt security files.

Access to Digital Library content across the network and access through web-OPAC.

Contains extensive on line help facility to guide the user.

Access to Virtual Library content by creating links to different websites and access through web-OPAC.

Free tools for direct database interaction, and easy entry for fast data correction of material.

Optional Swipe Card System to monitor entry and exit of Members / Visitors.

Graphical representation of Expenditure, Books in Demand, New Arrivals, Material distribution, Member transaction details, stock status etc., can be generated.

Optional Web OPAC with on line Reservation, Purchase Request, Search for Materials and Transactions.

Facility to track the Saved, Modified, Deleted and Circulated materials through Log entries for each action (Book Entry/ Circulation / Purchase Orders etc).

Allows users to search materials by creating a login exclusively for common users and giving access only to OPAC search, LOC and Reservation. This allows the users to get the information about the availability of books from anywhere inside the campus and anywhere in the world through Web-OPAC.

MODULES OF LIBSOFT



Database Management: Easy maintenance of Database through Backup (Taking a backup of the existing database), Restoring (restoring the old database to the current one to refer old details), Clearing the Old Transactions, Closed Purchase orders. Importing and exporting the

data from and to MARC 21 format using MARC tags, to facilitate transfer of data between networked libraries.



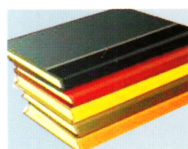
Administrator: Creating users (For E.g. Transaction, OPAC, Reports, Masters, Librarian, etc.) with access to specific modules or sub menu along with password and expiry date. There is no limit and any number of users can be

created. Spelling correction of master material entry by Find and Replacement (Bulk), Log maintenance, etc. can be done.



Acquisition: Purchase requisition, On line approval, Purchase order generation for regular items (Books, CDs etc.) and Subscribed items (serials). Purchase orders, Renewals can be sent through E-mail to the vendors. Updating the

purchase request status.



Cataloguing: User defined material categories (viz. Books, Journals, DVDs etc.), simplified material master entry for all kinds of materials including Books, Non-Books, Digital Library (any kind of (downloaded) file or collection of files can

be catalogued from anywhere in the network and retrieved through OPAC), Virtual Library (Web address of articles, sites, e-journals, etc. can be catalogued and retrieved through OPAC) etc., Multiple copies entry, User defined member categories (To fixing the due days with material category wise, fine amount, SDI Access etc., for different member categories like Students, Librarians, HOD, Professor etc.), Member registration with photo identification, Vendor registration, Budget Master (For allocating budget amount to different departments), Currency value updation, User defined calendar with Holiday list generation. All master entries/modifications/deletions information will be maintained in a Log file with user name and time of operation for administrator reference. Library news can be entered here, which will be displayed in OPAC with Library Collections.



Journals: Simplified Journal entries with a master, transaction and Journal auto issues generation. Detailed Article indexing, Reports on Journal data, journals bindings, Missing issues and Journal circulation report.



Transaction: Bar-code enabled circulation (Issue, Return, Bulk Issue, Bulk Returns, Renewal, Reservation and ILL(Inter Library Loan) for all kinds of materials. Maintaining the details of the material which has been Issued,

Returned, Reserved, Cancellation of existing reservation and sent for binding.



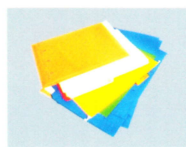
Bar-Coding: Generate ID cards for members with bar-code(Member ID) and Photograph (Optional) and Accession number labels with bar-code(Accession number) along with

Classification number and Organisation/Institution name and logo in each label.



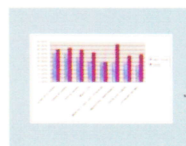
RFID: Radio Frequency Identification (RFID) is the technology that has revolutionized the way identification and tracking of items is carried out. It's key features are - Contact less, works on Non-

line of sight, Acts as a data carrier, Simultaneous Identification of tags, Reusable, Fast transaction, high security for materials.



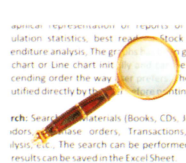
Documentation: Report generation on material availability, circulation statistics, New Arrivals, periodicals not received, dailies not received, budget analysis, expenditure analysis etc. for selected fields in the selected format in Excel

Sheet. Generation of no due certificates, Reminders for overdue material, Fine collections. Reminder to members and vendors through E-mail, SDI(Selective Dissemination of Information), CAS(Current Awareness Services), Generating bar code enabled ID cards with photo identity and bar code slips for materials. Report generation is flexible and only the fields selected by the user will appear in the report according to the criteria set by the user and in the sort order set by the user. The user can beautify these reports before printing in the hard form.



Statistics: Graphical representation of reports of Materials in Demand, Circulation statistics, best readers, Stock status, Vendor Rating, expenditure analysis, The graphs has been generated as Bar chart or Pie chart or Line chart initially and

can be shown in Ascending or Descending order the way user prefers. The graphs can edited and beautified directly by the user before printing in the hard form.



Search: Search for Materials (Books, CDs, Journals, etc), Members, Vendors, Purchase orders, Transactions, Reservations, Budget Analysis, etc., The search can be performed for selected fields and the results can be saved in Excel Sheet.



OPAC: Online Public Access Cataloguing Search for Books, Journals, CDs, etc., Web Search (connecting to Library Of Congress), Reservation of Items, Material List(Unique Titles), Purchase Requisitions, etc., Digital Library files can be directly viewed from any node on Read only mode. Virtual Library Collections (Articles/Sites) can be directly viewed from any node provided Internet facility is extended to that node.



Help: Online Help for Libsoft operating procedure. Detailed steps for each operation can be availed by pressing Help key F1.

LIBSOFT®

LIBSOFT VERSIONS:

- Libsoft 9.5.0 School Version
- Libsoft 9.5.0 Standard Version
- Libsoft 9.5.0 Professional Version
- Libsoft 9.5.0 IT Version
- Libsoft 10.0.0 Web Version
- Libsoft 9.5.0 Web module (for Material search, Reservations search, Transaction search etc.,)

Optional Libsoft Accessories:

- Swipe Card System Integration.
- RFID System Integration.
- Barcode printer, ID Card printer Integration.
- Accessories like Barcode Readers, Printers, Barcode Labels & MS SQL Server

Software Up-gradation: Libsoft is Up-graded periodically by dedicated and highly skilled personnel. These upgrades will be supplied FREE of cost during the warranty period in order to enhance the usage of Libsoft.

Call +91-9449820932 for Free Demo & Trial Version installation.

LIBSOFT ON WEB:

- Browsing Library information on Internet or Intranet.
- Multiple media type search (Books, Serials, CD, Audio, Video, etc.) from anywhere in the world.
- Circulation/Reservation status of each being searched for.
- Reservation of item in the library from anywhere in the world.
- Transaction of item in the library through web (Dispatch can be done through Courier)
- Browsing E-Journals (which is library subscribed) can be viewed.
- Virtual library bring the viewing of websites/ on line pages.



HARDWARE CONFIGURATION

System Requirements	Minimum	Recommended
Processor	Pentium IV	Pentium IV or Higher
RAM (Primary memory)	512 MB	1 GB
Hard Disc Capacity	40 GB	160 GB
Monitor Resolution	Color (1024x768)	Color (1024x768) or Higher
Operating System	Win. XP Professional	Windows 2003 server
Printers	B/W Laser	B/W Laser (Samsung)
Bar code Reader	Any	Any
Telephone / Internet	None	For Web OPAC, Virtual Library, Sending Purchase Order, reminder through mail.
CD ROM Drive	RW CD ROM Drive	RW CD ROM Drive
Bar Code Reader	None	Optional (Visitors Log)
Flat Bed Scanner	None	Optional (For Virtual Library Books, Scanning Photos, etc.,)
Lamination Machine	None	Optional (For ID Cards)
RFID Equipments	None	Optional (For Quick Transaction, Material In & Out Security.)

Environ Software Pvt. Ltd.

Corporate Office:

Environ Towers

60/4, 4th Floor, Hosur Road
Konappana Agrahara, Electronic City
Bangalore - 560 100. India

Tel: +91-80-2852 2191 / +91-94497 50282

Telefax: +91-80-2852 2192

e-mail: environ@environsoftware.com
libsoft@environsoftware.com

Branch Office:

T.R Residency, No.A/T-2, 3rd Floor, Sao Paulo,
Taleigao, Goa - 403 002. India

Tel: +91-832- 2452069

Business Applications

- E-Institute : Institution management package(Web enabled).
- Qsoft : A software for preparing questions and evaluating students(Web enabled).
- Enic : Inventory control package for business (Web enabled).
- Xibit : A software for presenting pictures and comments for a Demo.
- Breeze : An Automation software for complete organisation

Scientific Simulation Software

- Hydrodyn-OILSOFT : Simulation of oil slick transport in open waters.
- Hydrodyn-POLSOFT : Simulation of Conservative and Non Conservative pollution transport.
- Hydrodyn-SEDSOFT : Simulation of transport of cohesive and Non cohesive Sediments.
- Hydrodyn-STMSOFT : Simulation of Solute transport, Bio-degradation, Chemical reaction processes in ground water flow system.
- Hydrodyn-AIRSOFT : Simulation of Air Flow over complex terrain.